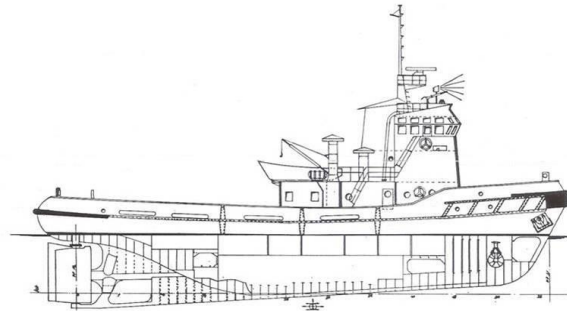


TUG BOAT TECHNICAL DATA:
N/M: "PALENÇA"

SHIP DATA MANAGEMENT:

- IMO Nr. : 8212788
- Building Shipyard: LISNAVE Shipyard (Portugal)
- Construction Year: 1982

CLASSIFICATION SOCIETY:

- Bureau Veritas (BV)

ID BV: 02442G

CLASSIFICATION:

✕Hull✕Mach, Tug, Coastal Temporary Unrestricted Navigation

INSURANCE COMPANY:

- LUSITANIA MAR

SHIP DATA

- Length O.A.: 34,50 m
- Beam M'L'D: 9,40 m
- Depth M'L'D: 5,20 m
- Draught: 5,80 m

DISPLACEMENT

- 618 T

LIGHT SHIP:

- 444 T

MAX FREE RUNNING SPEED:

- 12 Knots

BOLLARD PULL:

- 45 MT

GROSS TONNAGE:

- 321

NET TONNAGE:

- 59

ACCOMMODATIONS:

- 8

REGISTER PORT:

Setúbal, Portugal

CAPACITIES (APPROX.):

- Gasoil: 98 m³
- Fresh water: 45 m³
- Ballast: 74 m³
- Foam: 20 m³
- Dispersant: 20 m³

MAIN ENGINE:

- Motor Diesel MWM
- Power: 1 x 3.300 BHP (2429 kW) @ 500 RPM

Genereter Set:

- Motor Diesel MWM
- Power: 1 x 217 bhp (160 kW) @ 1500 rpm
- Power: 1 x 75 bhp (56 kW) @ 1500 rpm

SISTEMA DE COMBATE A INCENDIO:

- FFS Pump driven by Main Engine with capacity for 300 m³/h
- Two water/foam monitors capacity 300 m³/h each

DECK EQUIPMENT:

- Guincho de Reboque AR com dois tambores e comando local e da ponte, cabrestante, rolete de popa e pinos de guia;
- 1 Main towing wire: 600 m x 45 mm Ø

RADIO AND NAVIGATION AIDS:

- HF/MF, VHF(2), Radar(2), GPS, Navtex, Piloto Auto, Sounder
- Call Sign: CSSC

REGISTER Nr.:

- S - 47- RC

OWNER:

- REBONAVE – Reboques e Assistência Naval, S.A.